



***World Meteorological Organization
Organisation météorologique mondiale***

***Temps • Climat • Eau
Weather • Climate • Water***

**Commission for Basic Systems
OPAG on Information Systems and Services**

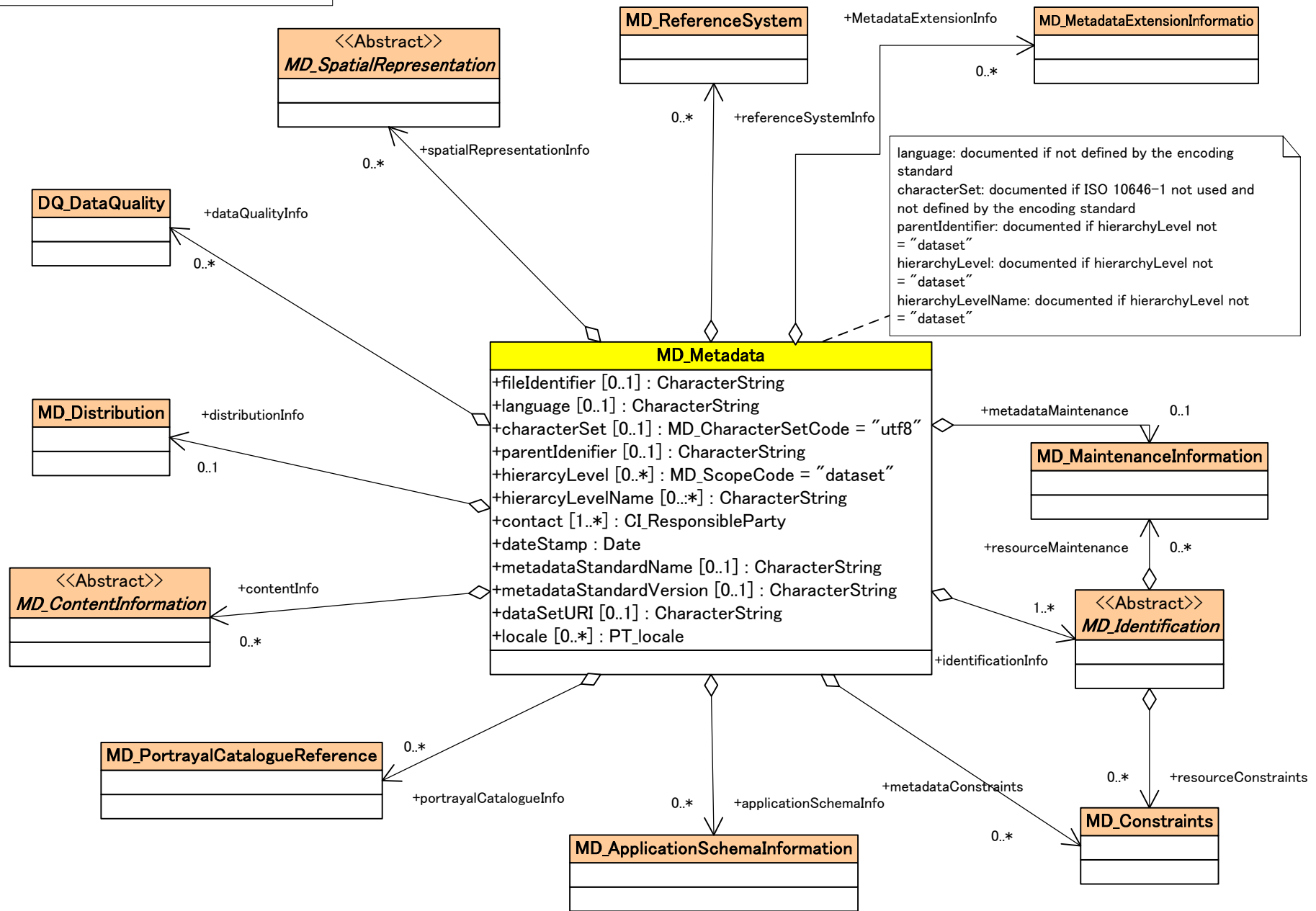
Draft version 1.1 of the WMO core profile of the ISO metadata standard

As developed by the CBS Inter-Programme Expert Team on Metadata
Implementation (IPET-MI) as at 16 September 2008

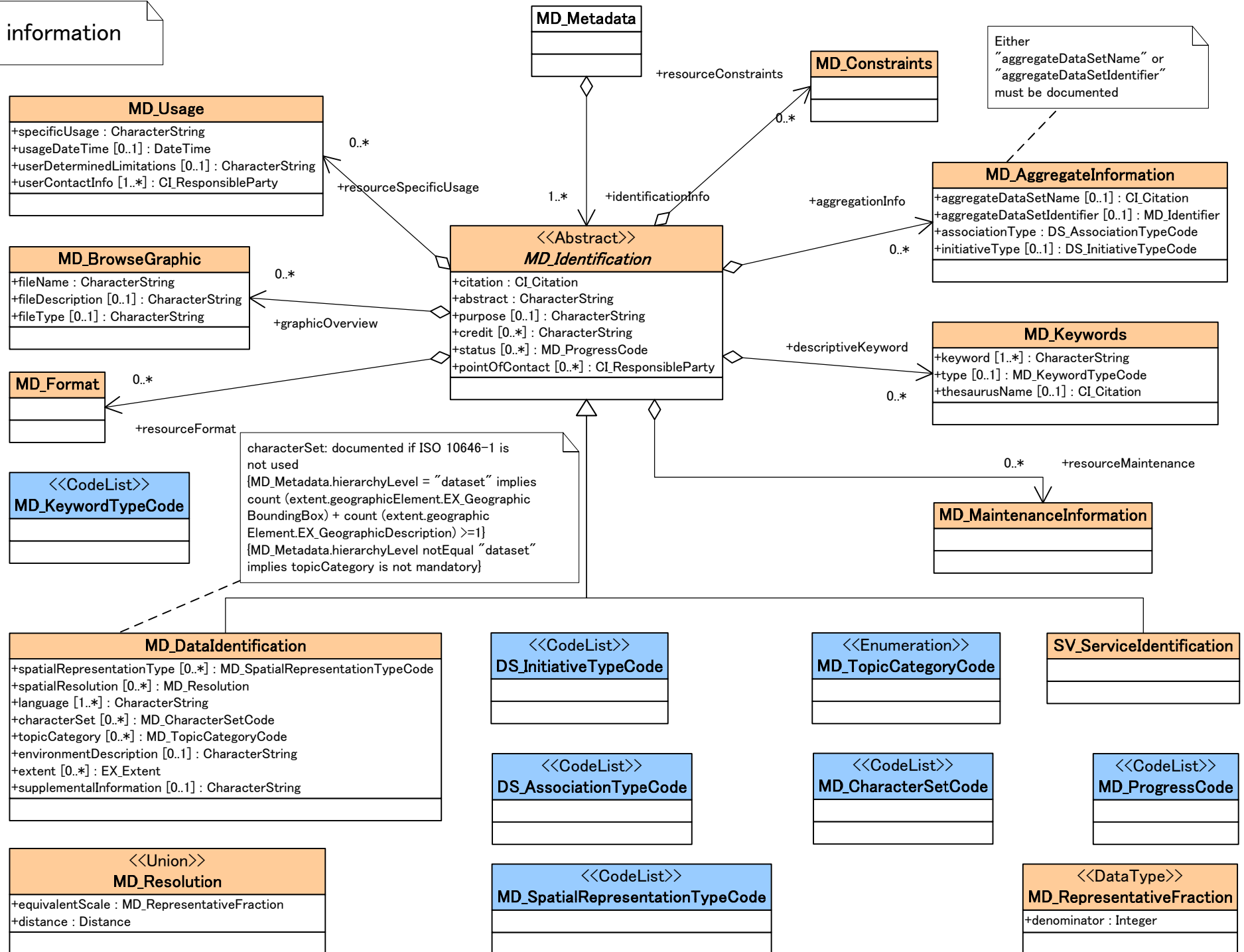
Copyright

*Since this information reproduces parts of the ISO 191xxx series of standards in the
WMO profile, Copyright remains with ISO.*

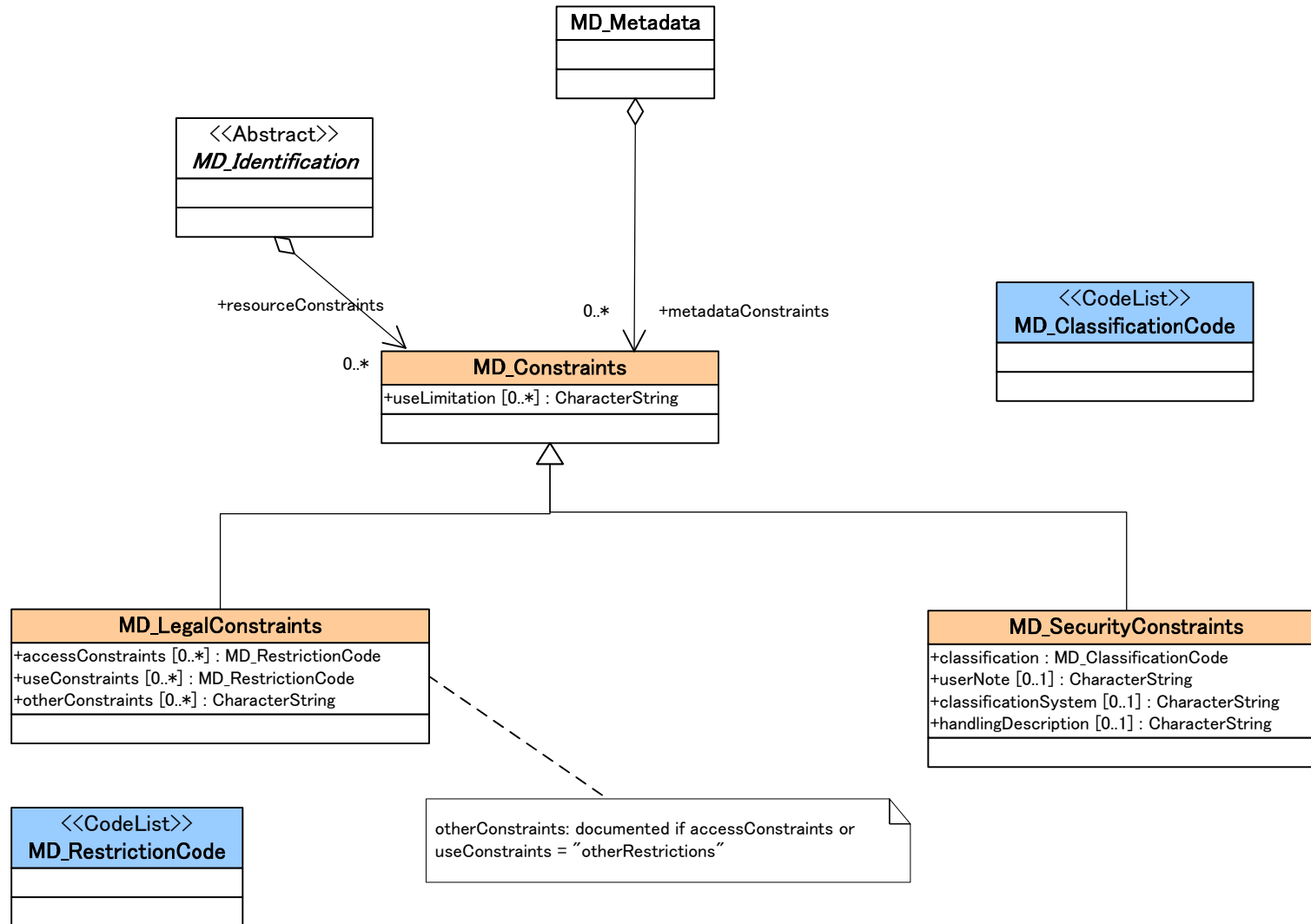
Metadata entity set information



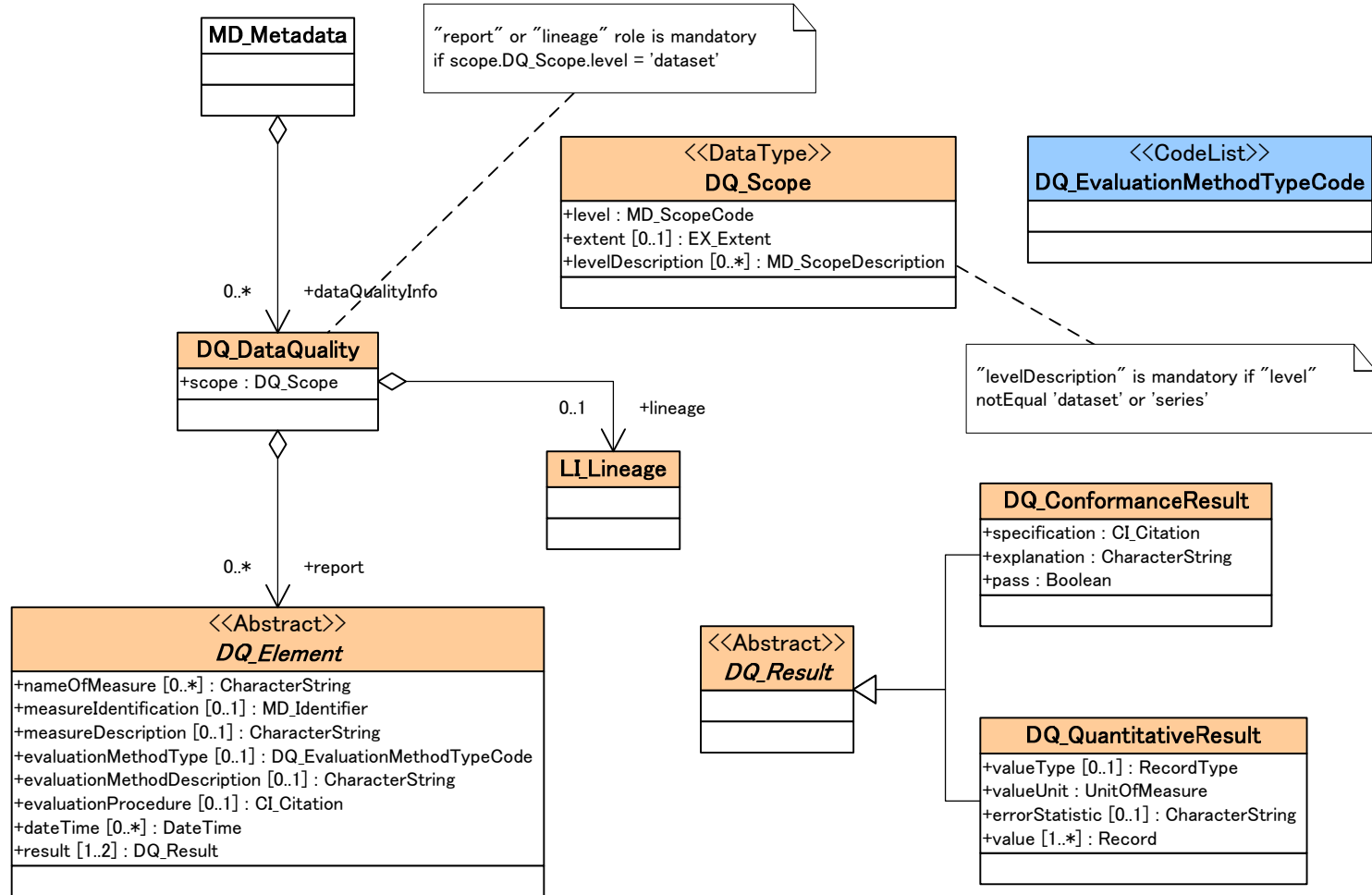
Identification information



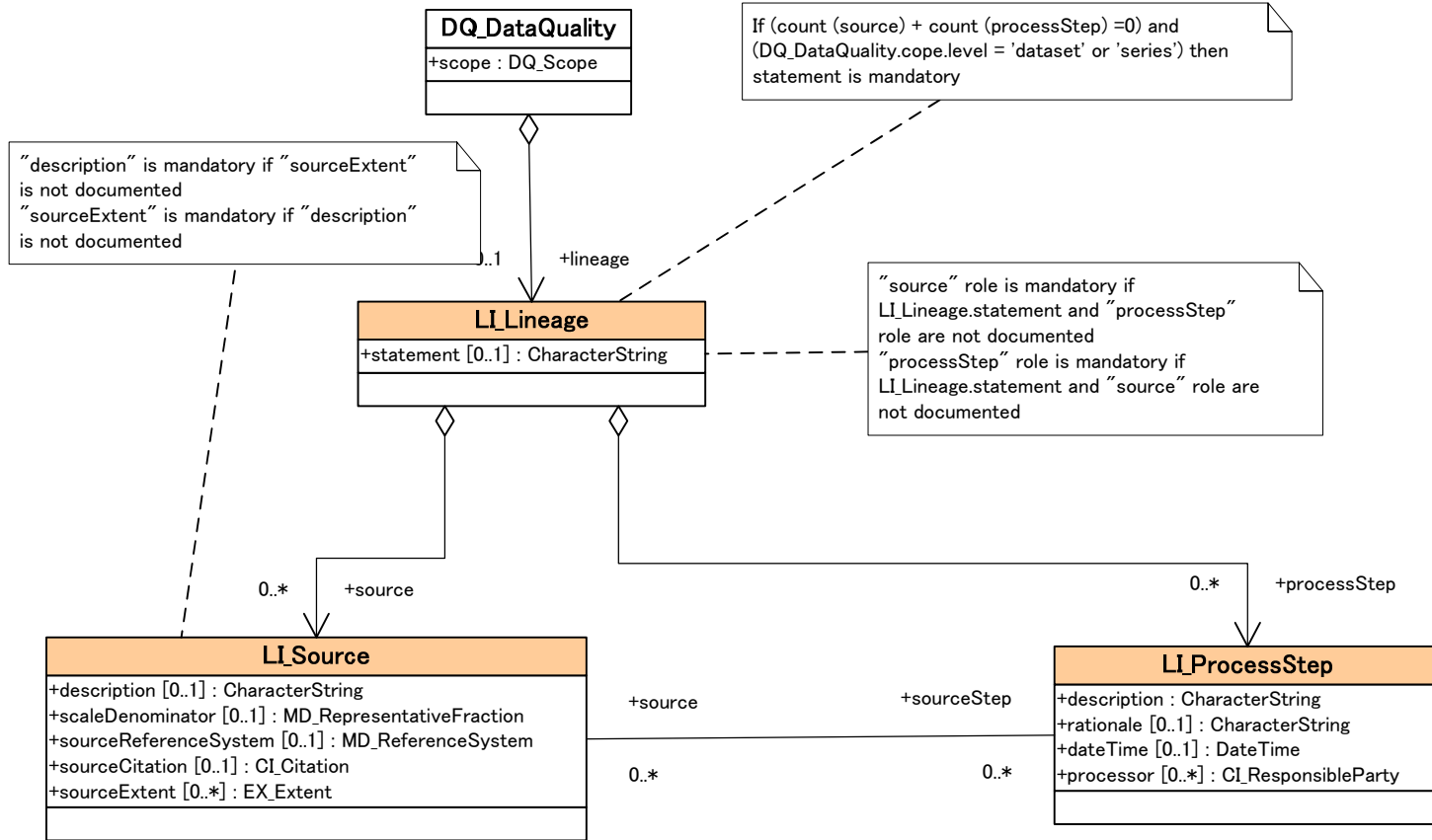
Constraint information



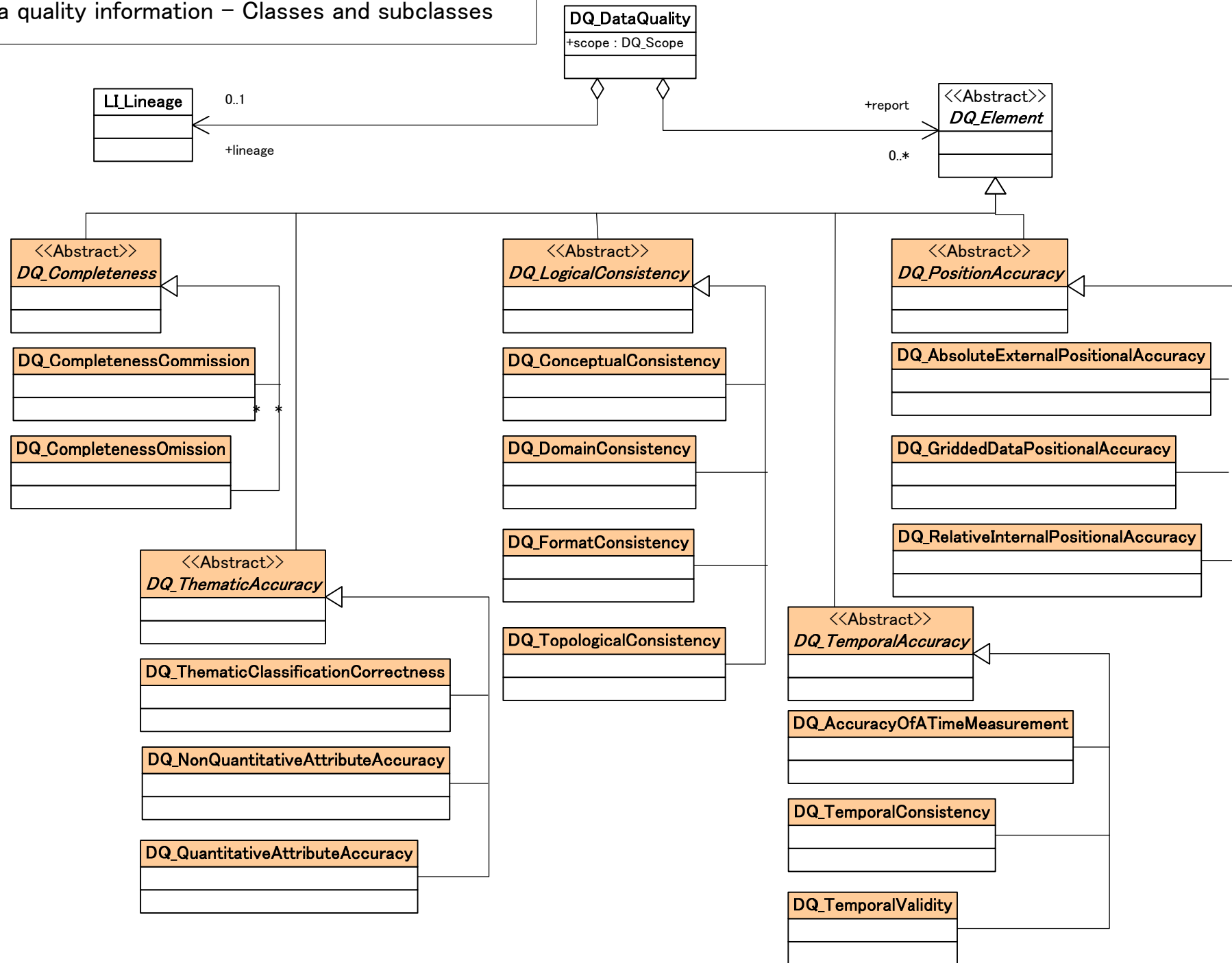
Data quality information – General –



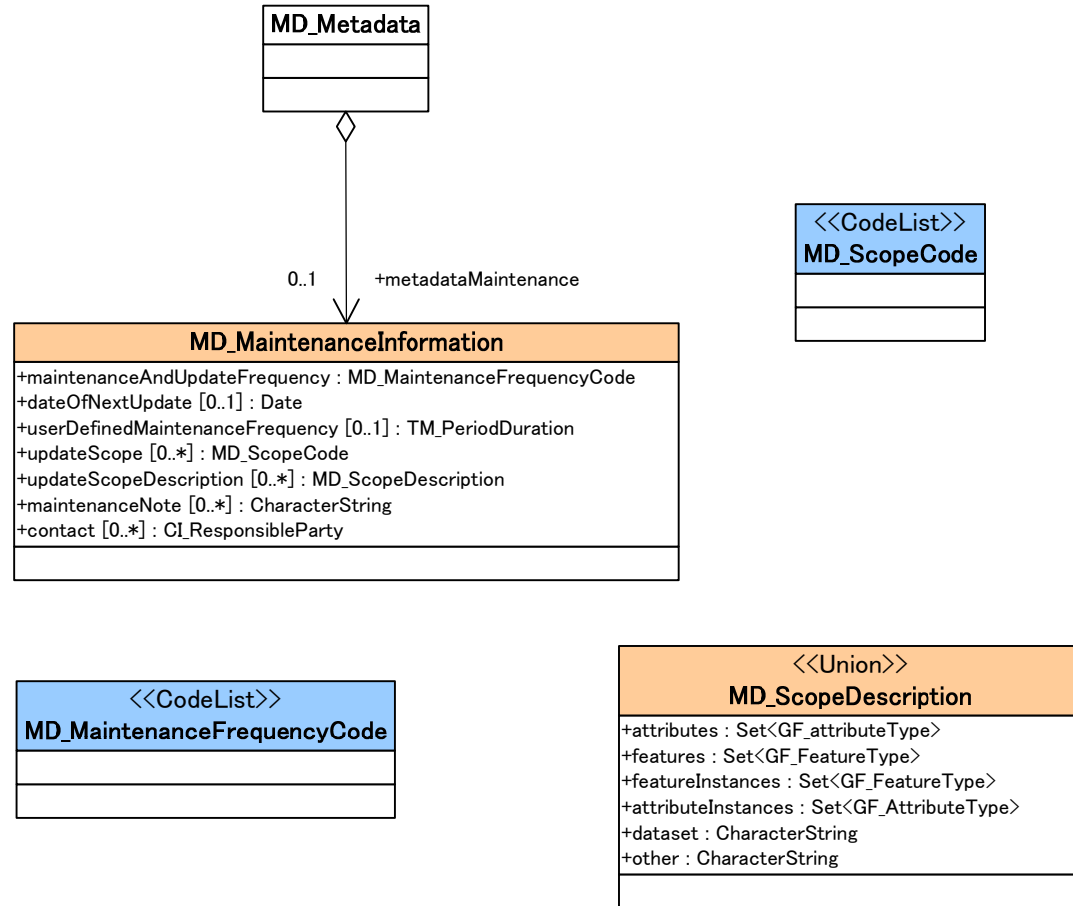
Data quality information – Lineage –



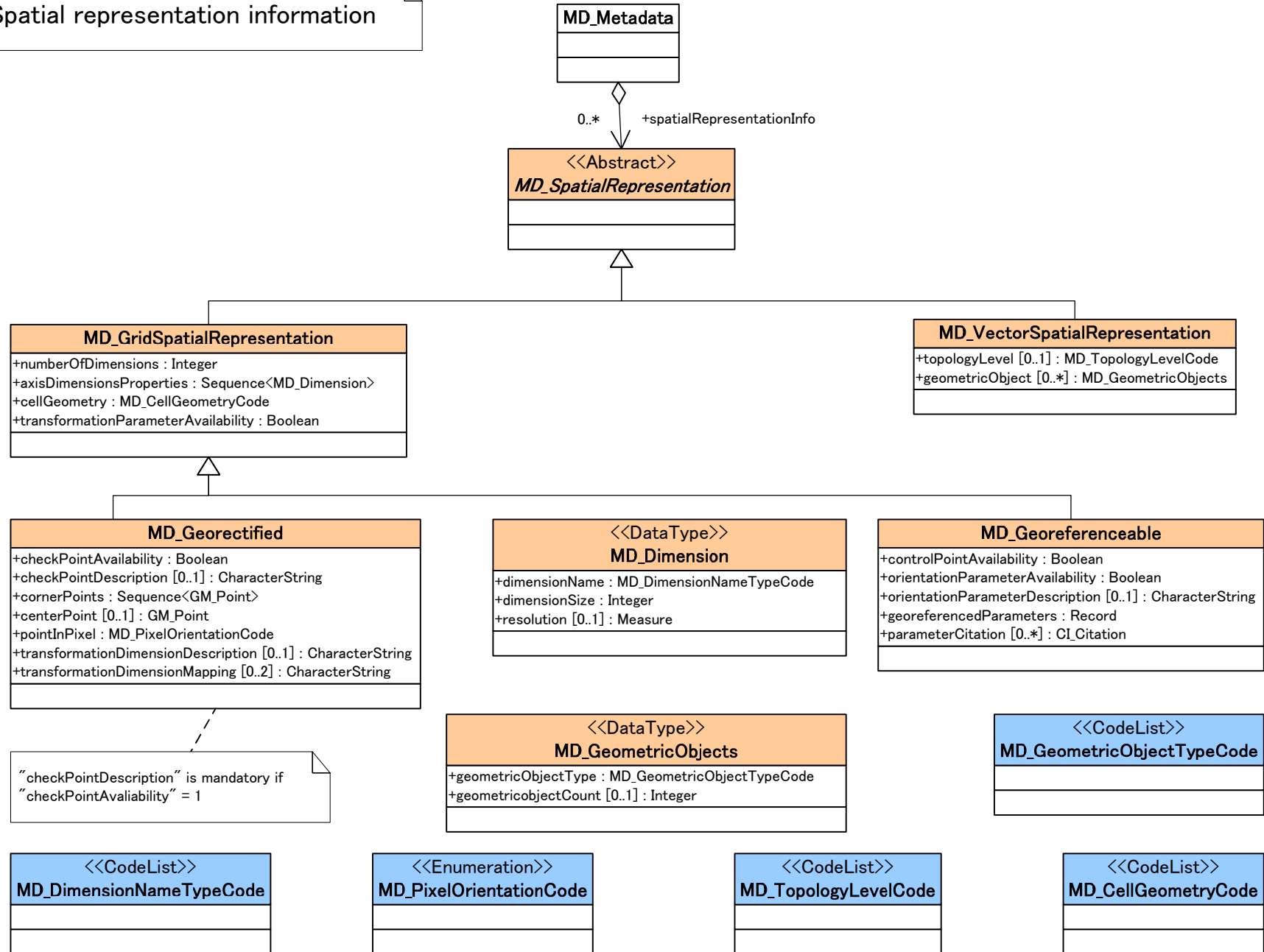
Data quality information – Classes and subclasses



Maintenance information

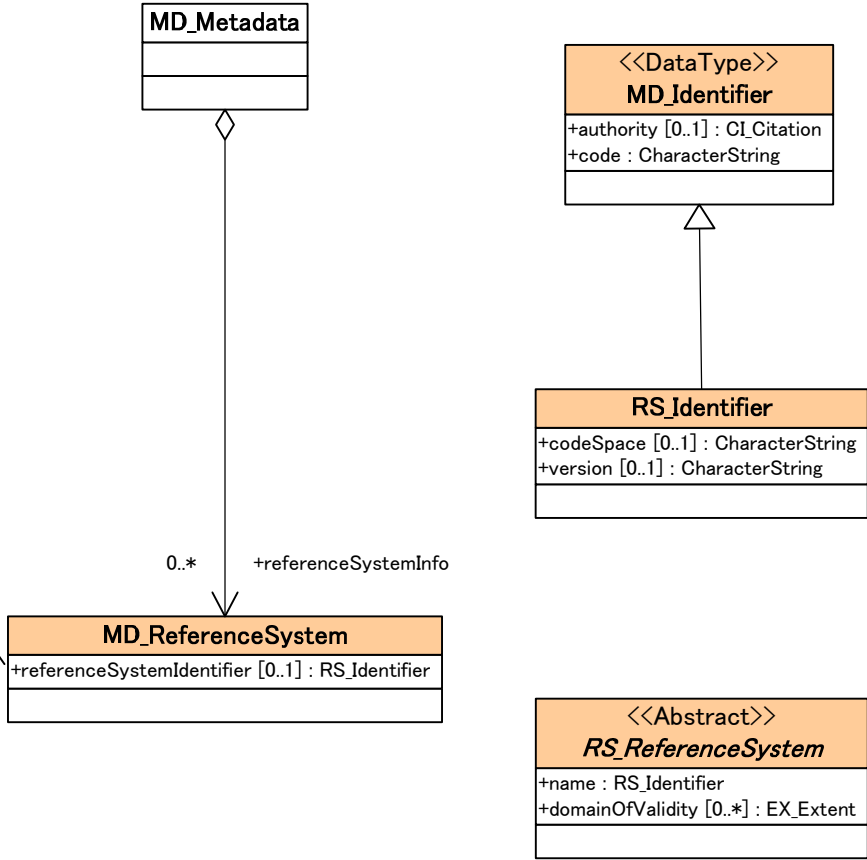


Spatial representation information

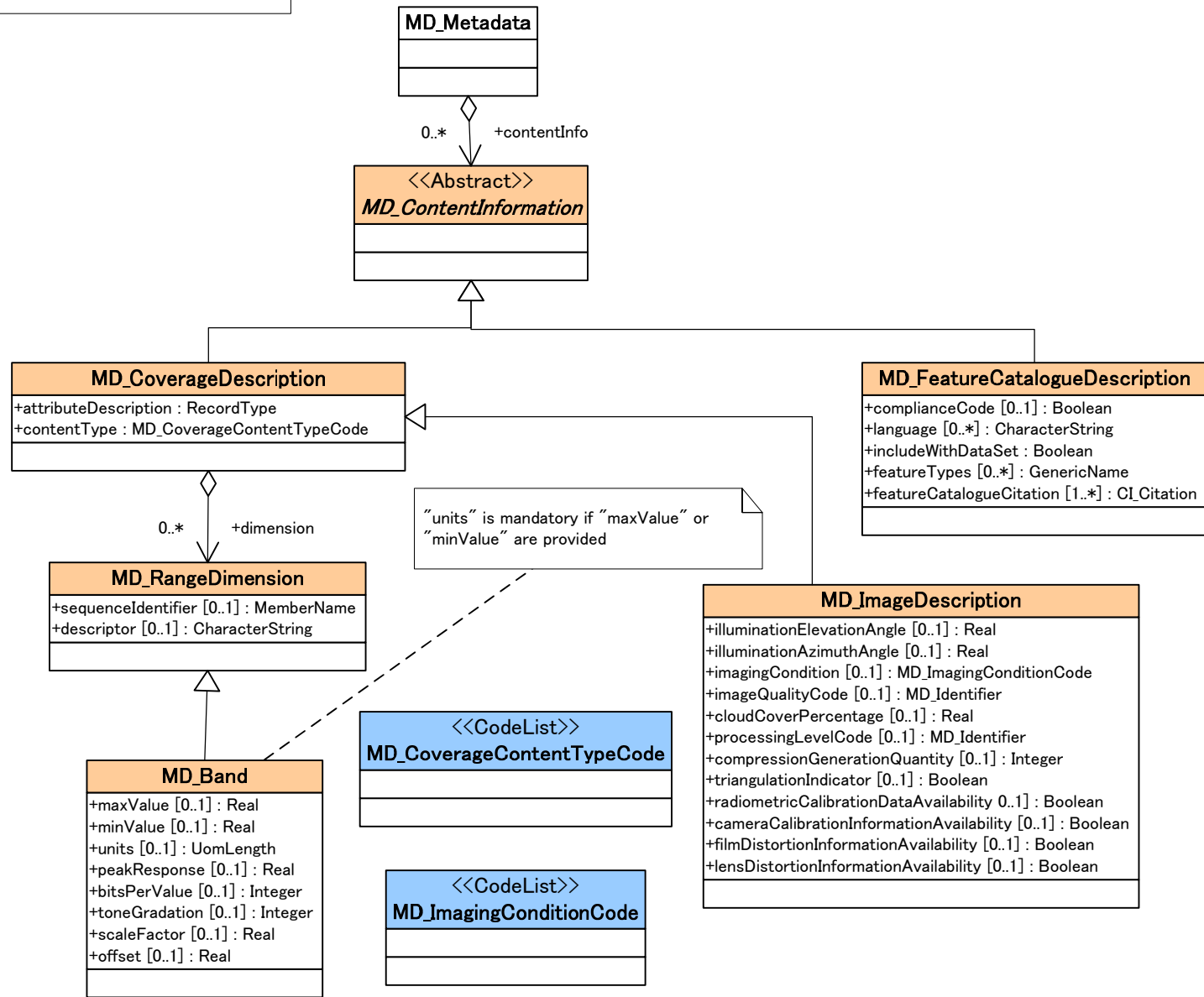


Reference system information

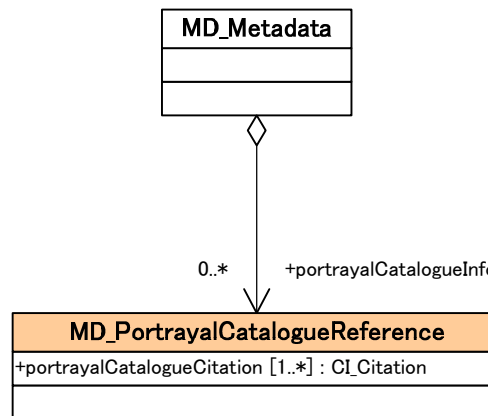
Refer to ISO 19111 when coordinate reference system information is not given through reference system identifier.



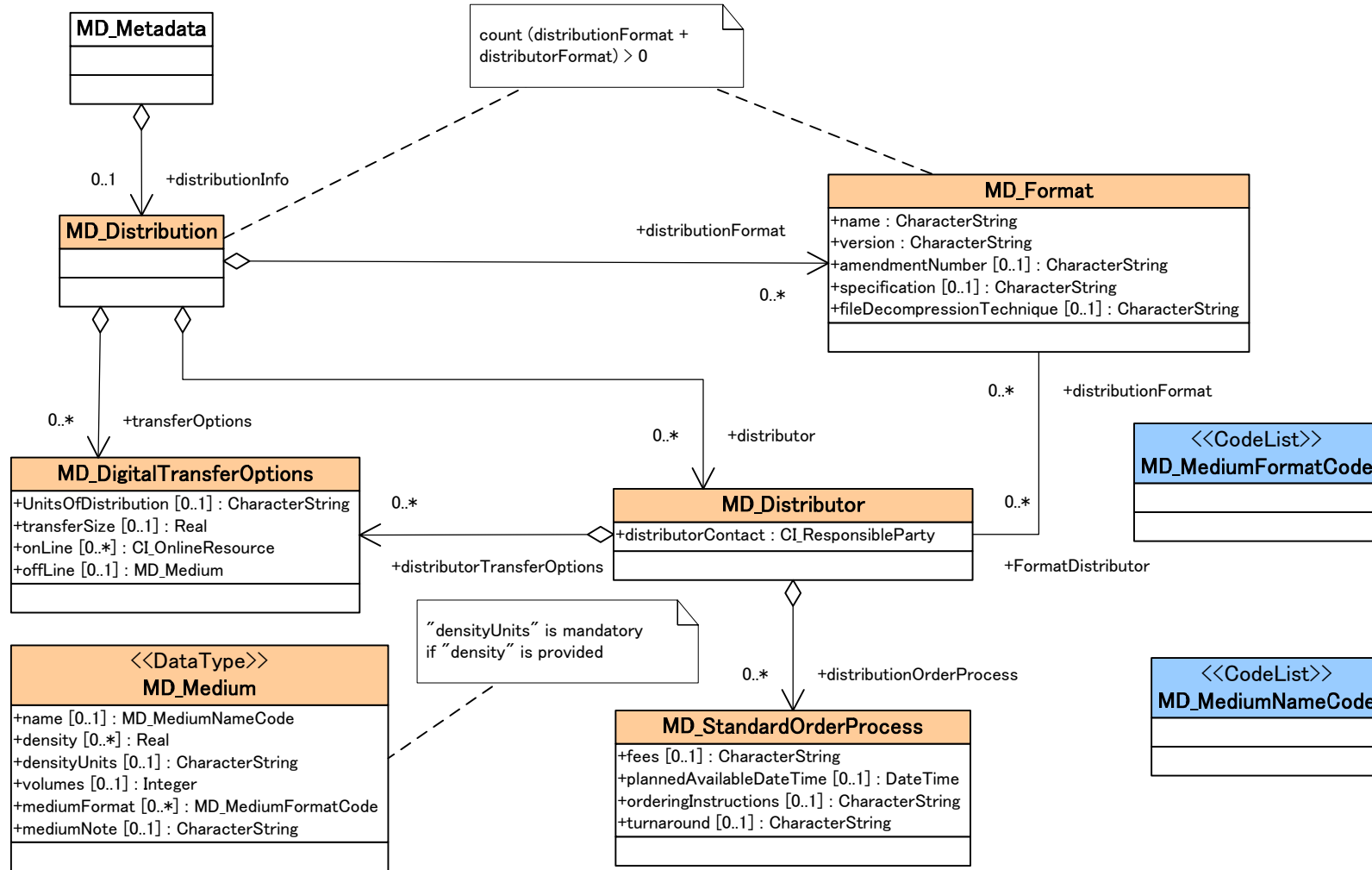
Content information



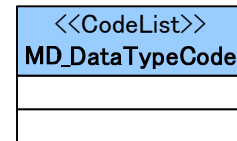
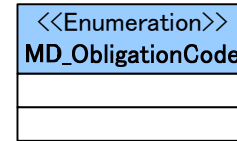
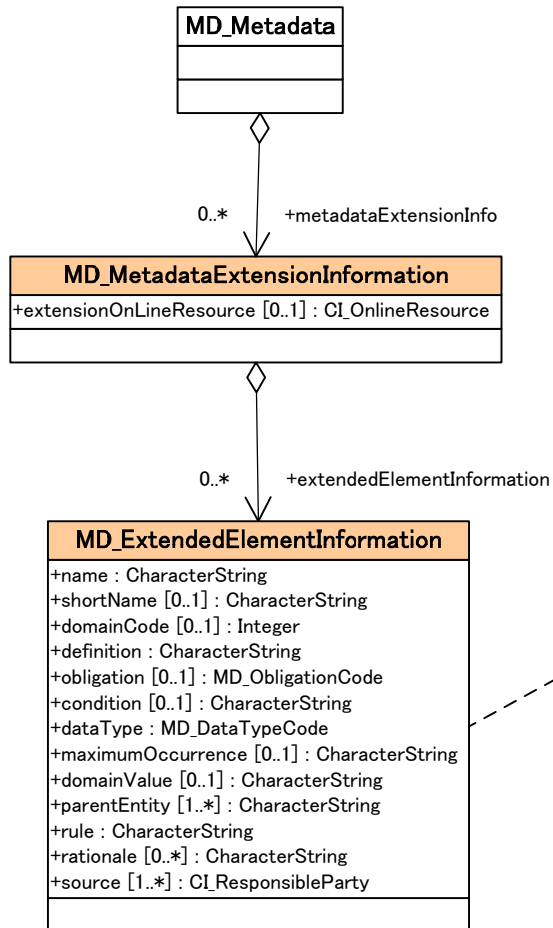
Portrayal catalogue information



Distribution information

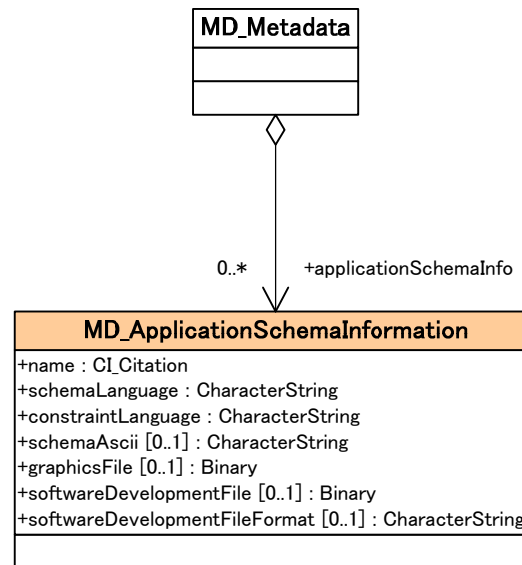


Metadata extension information

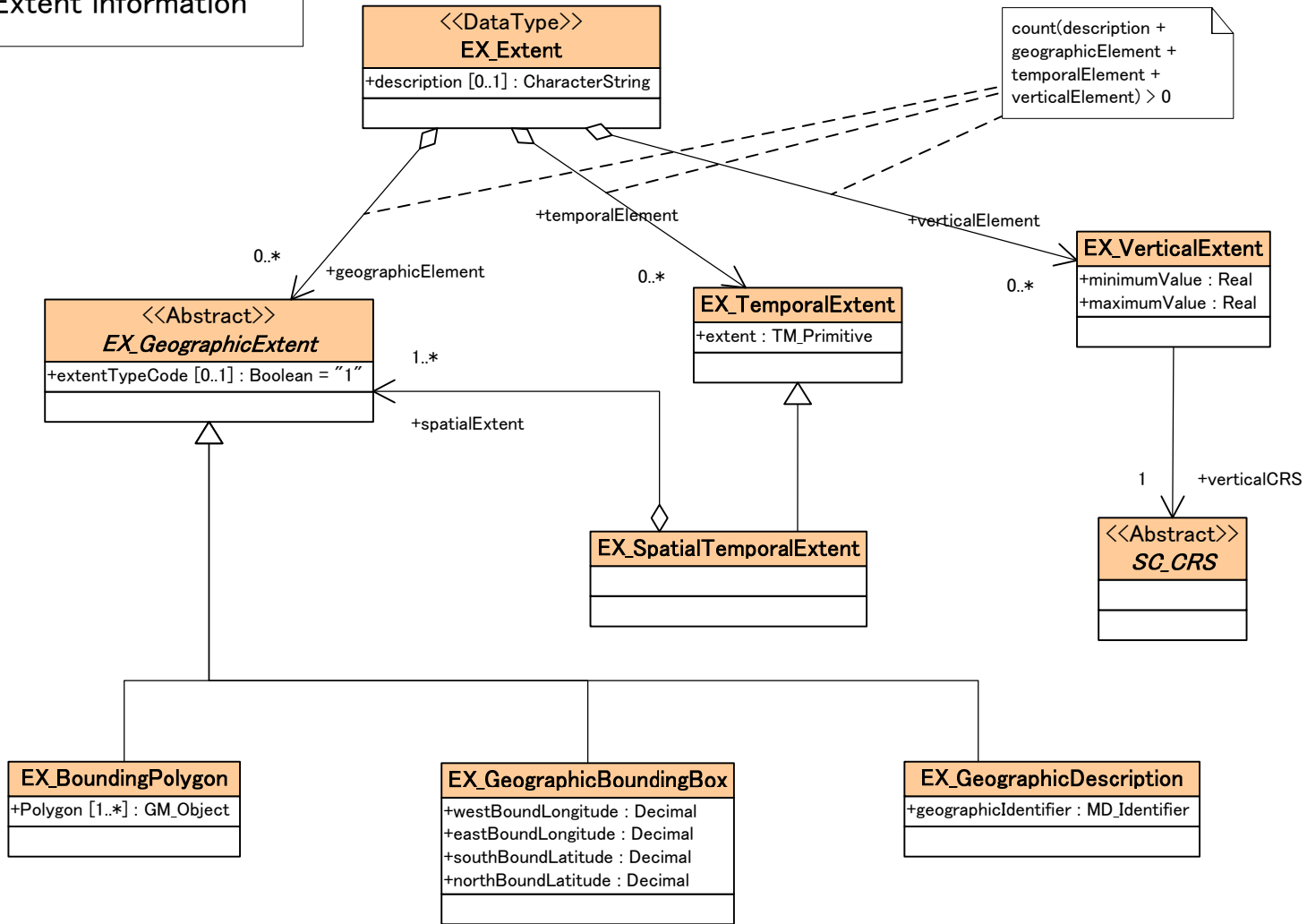


If "dataType" = "codelistElement" then
 "domainCode" is mandatory
 If "dataType" notEqual "codelistElement"
 then "shortName" is mandatory
 If "dataType" notEqual "codelist", "enumeration"
 or "codelistElement"
 then "obligation", "maximumOccurrence" and
 "domainValue" are mandatory
 If "obligation" = "conditional" then "condition"
 is mandatory

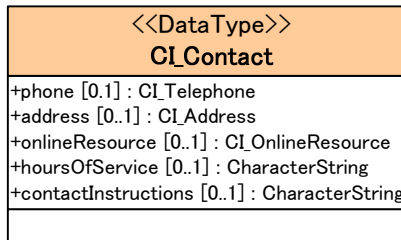
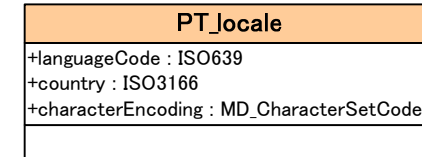
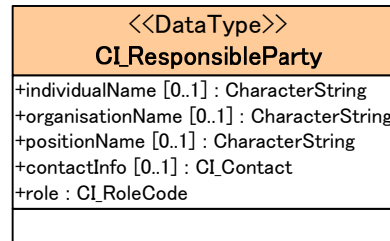
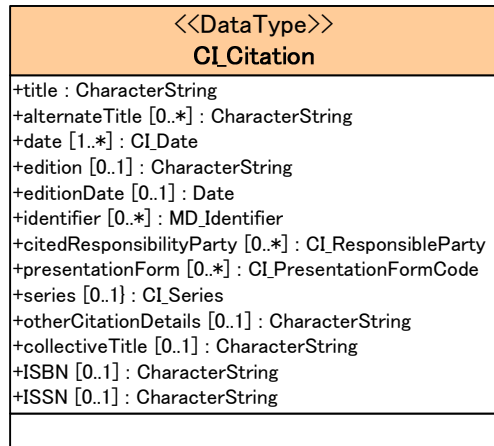
Application schema information



Extent information



Citation and responsible party information



count of (individualName + organisationName + positionName) > 0

