

WIS Monitoring Implementation

Jan 24, 2014

wmo

<http://www.wmo.int/wis>

Project managers:

Dates:

Jan 20, 2014 - Oct 1, 2016

Complete:

0%

Tasks:

35

People:

0

Tasks

Name	Begin date	End date
Facilitator	1/20/14	1/27/14
Prepare for workshop	1/20/14	1/20/14
Monitoring Workshop	1/21/14	1/24/14
Finalise workshop output	1/27/14	1/27/14
Review of draft docs	1/28/14	3/28/14
o Requirements for monitoring and reporting (doing now)		
Requirements analysis and gap analysis		
o Design a solution		
Investigate available solutions		
o Implementation plan/strategy		
o Resolve metrics and presentation formats		
• (expect homogenous solution)		
Agree on solution for monitoring aspects		
Agree on solution for reporting aspects		
Agree on initial summary statistics		
Agree on format and interfaces for exchange of data for monitoring		
ET-WISC	1/28/14	3/28/14
TT-OM	1/28/14	3/27/14
TT-DC	1/28/14	3/27/14
TT-GISC	1/28/14	3/27/14
(Noting GISC key role should heavily review workshop output and agree on way forward)		
Decide on what GISCs are willing to support and to provide		
Consider distributed tasks of GISCs (ie centres of excellence eg Presently two Discovery metadata monitoring systems)		
Agree on deliverable and reality check		
CBS - Demonstrate MD synchronization dashboard (pilots)		
TT-GISC review	1/28/14	3/27/14
Meeting	2/12/14	2/14/14
TT-CAC	1/28/14	3/28/14
auditing and review process requirements of monitoring		
TT-CAC review	1/28/14	3/28/14
Meeting	3/25/14	3/27/14
ET-CTS	1/28/14	3/27/14
Network monitoring (what and how)		
Send ET-CTS the docs from this workshop as soon as available requesting input for ET-CTS		
Reality check (trim requirements or put in phase		
Implementation guidance (May)		

Tasks

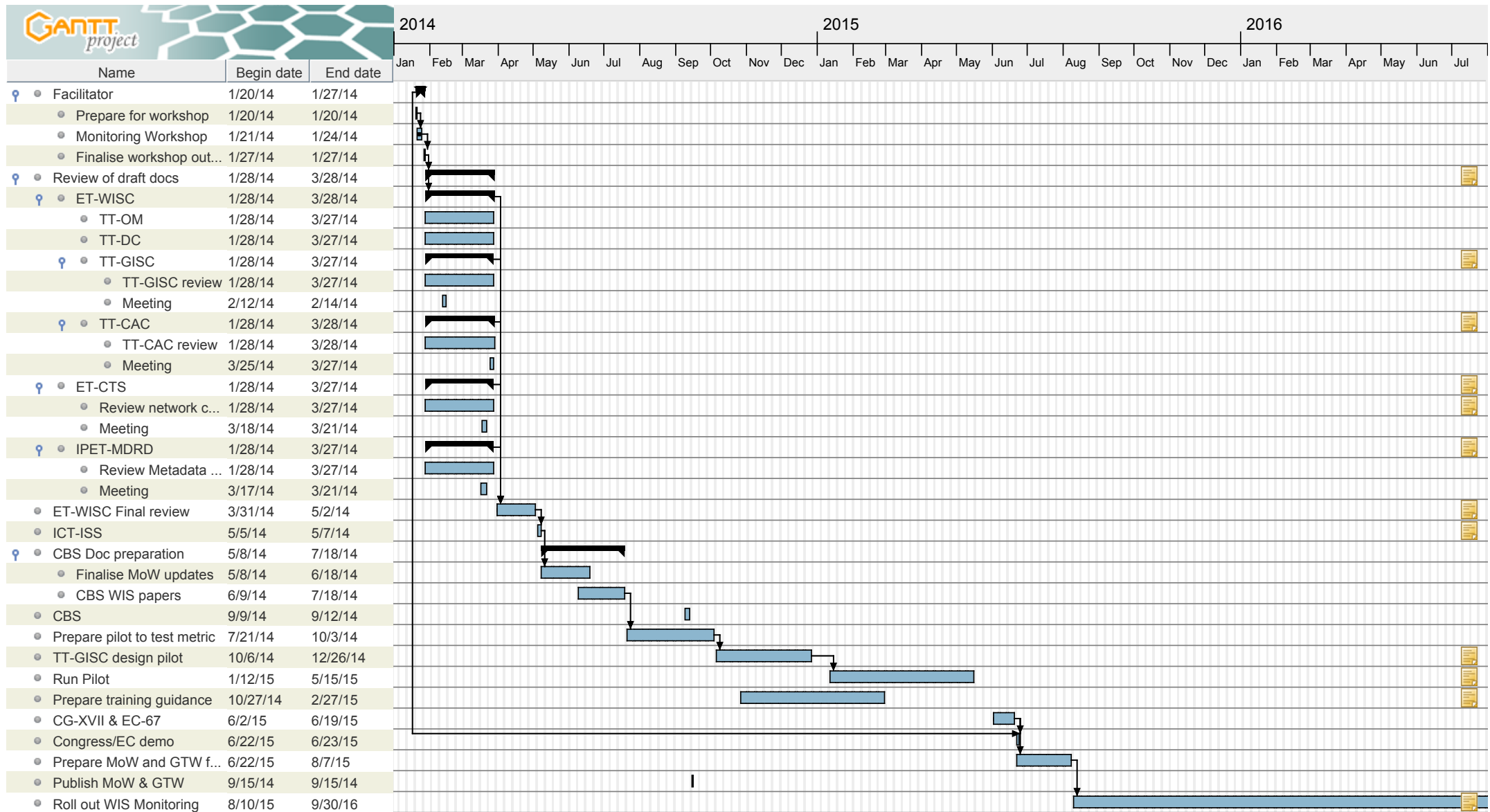
Name	Begin date	End date
Review network component Network monitoring (what and how) Send ET-CTS the docs from this workshop as soon as available requesting input for ET-CTS Reality check (trim requirements or put in phase Implementation guidance (May)	1/28/14	3/27/14
Meeting	3/18/14	3/21/14
IPET-MDRD Review plan and metadata aspects of monitoring CBS - Demonstrate quality of metadata (demo model) (Note TDCF migration is out of scope for steady state monitoring)	1/28/14	3/27/14
Review Metadata component	1/28/14	3/27/14
Meeting	3/17/14	3/21/14
ET-WISC Final review Provide input for ICT-ISS	3/31/14	5/2/14
ICT-ISS Date not yet fixed	5/5/14	5/7/14
CBS Doc preparation	5/8/14	7/18/14
Finalise MoW updates	5/8/14	6/18/14
CBS WIS papers	6/9/14	7/18/14
CBS	9/9/14	9/12/14
Prepare pilot to test metric	7/21/14	10/3/14
TT-GISC design pilot - TT GISC to find volunteers to run pilots - Pilot elements would be those from document - Need at least 2 GISCs on each element - Ensure participation from all GISCs, especially aiming to engage newer GISCs -	10/6/14	12/26/14
Run Pilot - mostly realtime monitoring - include GISC monitoring of the WIS (AMDCN), their reaction and escalation - include the preparation of reports - consider displaying in CPDB	1/12/15	5/15/15
Prepare training guidance o Training, guidance, publicity, etc	10/27/14	2/27/15

Tasks

Name	Begin date	End date
CG-XVII & EC-67	6/2/15	6/19/15
Congress/EC demo	6/22/15	6/23/15
Prepare MoW and GTW for publication	6/22/15	8/7/15
Publish MoW & GTW	9/15/14	9/15/14
Roll out WIS Monitoring	8/10/15	9/30/16

So far we haven't really discussed the roll out part of the monitoring implementation plan

Gantt Chart



Resources Chart

